



ALABAMA
MANUFACTURED
HOUSING
ASSOCIATION

2020 MANUFACTURED HOMES

From Manufacturers who were
scheduled to display at the
SCMHI Tunica Show

31
HOMES
REPRESENTED

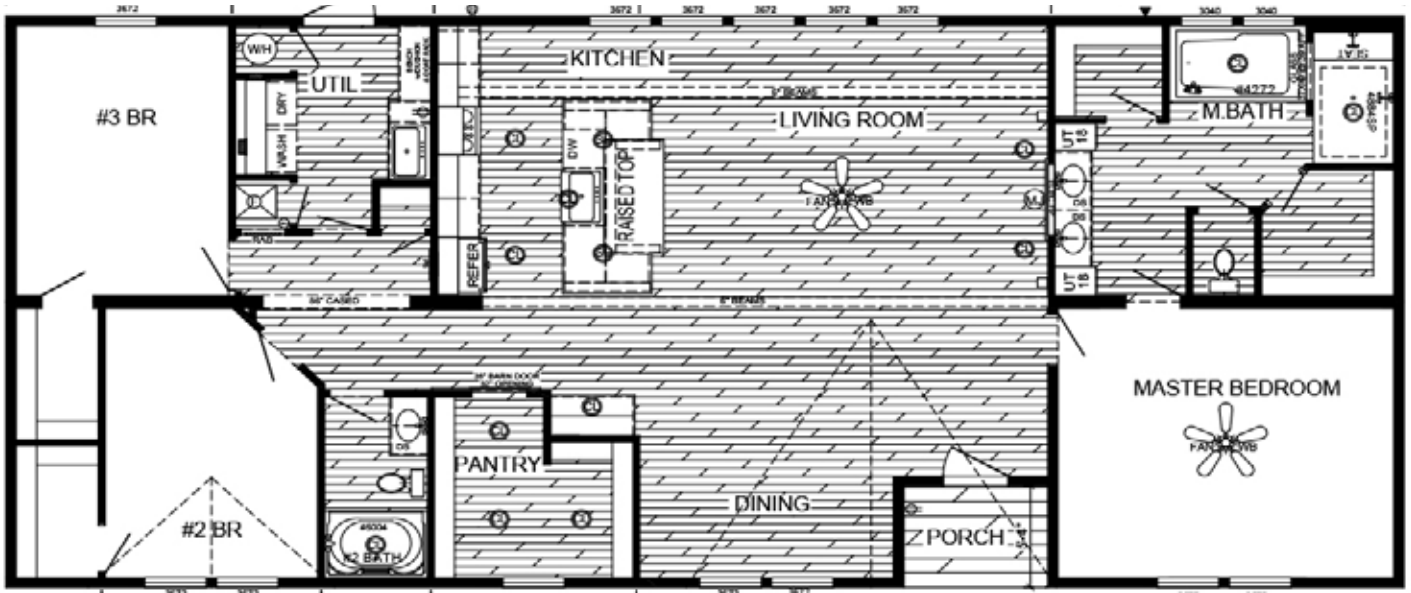




Deer Valley
 HOMEBUILDERS, INC

The Yule
 Model WL-7207

FEATURES: 32x72 | 3 Bed/2 Bath | 2,040 Sq. Ft.



For information on this home contact:
 Patrick Cashion
 pcashion@deervalleyhb.com
 o: 205.468.8400 Ext. 109
 c: 205.454.3242



Deer Valley
 HOMEBUILDERS, INC

MOSSY OAK NATIV LIVING SERIES
Model WL-MONL-6809

FEATURES: 32x68 | 3 Bed/2 Bath | 1,920 Sq. Ft.



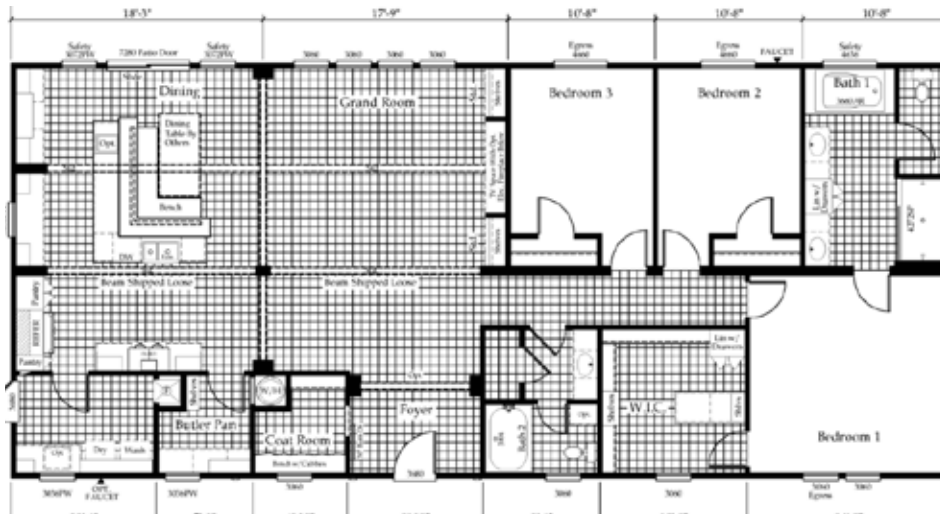
For information on this home contact:
 Mitch Stults
 mstults@deervalleyhb.com
 o: 205.468.8206
 c: 205.495.6266



WINSTON
HOMEBUILDERS

The Helicon 2.0 Model 327642E

FEATURES: 76X30 | 4 Bed/ 2 Bath | 2,280 Sq. Ft.



For information on this home contact:
Boo@winstonhb.com
jason.yarbrough@winstonhb.com
 o: 205.875.2019



The Corinth Model 326042A

FEATURES: 60x30 | 4 Bed/2 Bath | 1,800 Sq. Ft.



For information on this home contact:
Boo@winstonhb.com
jason.yarbrough@winstonhb.com
o: 205.875.2019




The Beech Grove Model 326432B

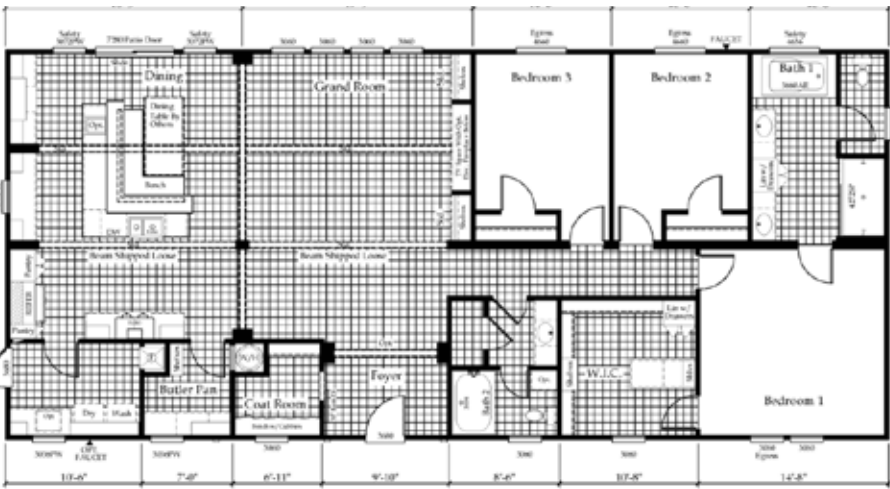
FEATURES: 64x30 | 3 Bed/ 2 Bath | 1,920 Sq. Ft.



For information on this home contact:
Boo@winstonhb.com
jason.yarbrough@winstonhb.com
205.875.2019




The Upshaw
Model 326832A
FEATURES: 68x30 | 3 Bed/ 2 Bath | 2,040 Sq. Ft.

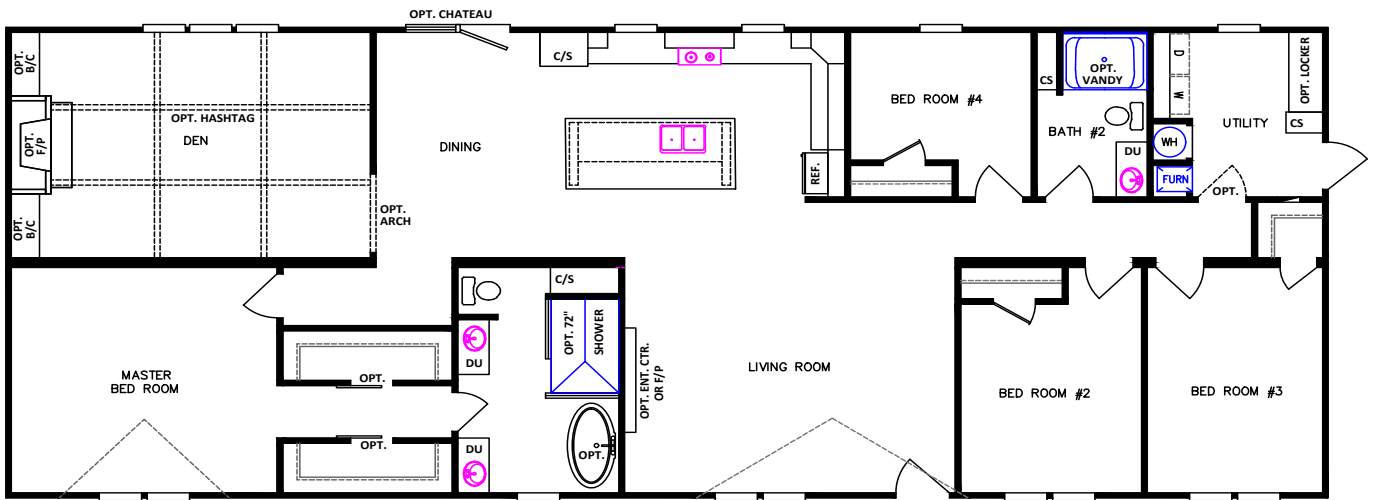


For information on this home contact:
Boo@winstonhb.com
jason.yarbrough@winstonhb.com
 o: 205.875.2019



Kabco Model KB-3245

FEATURES: 32x82 | 4 Bed/2 Bath | 2,340 Sq Ft
2 Living areas featuring 2 Fireplaces and bricking options

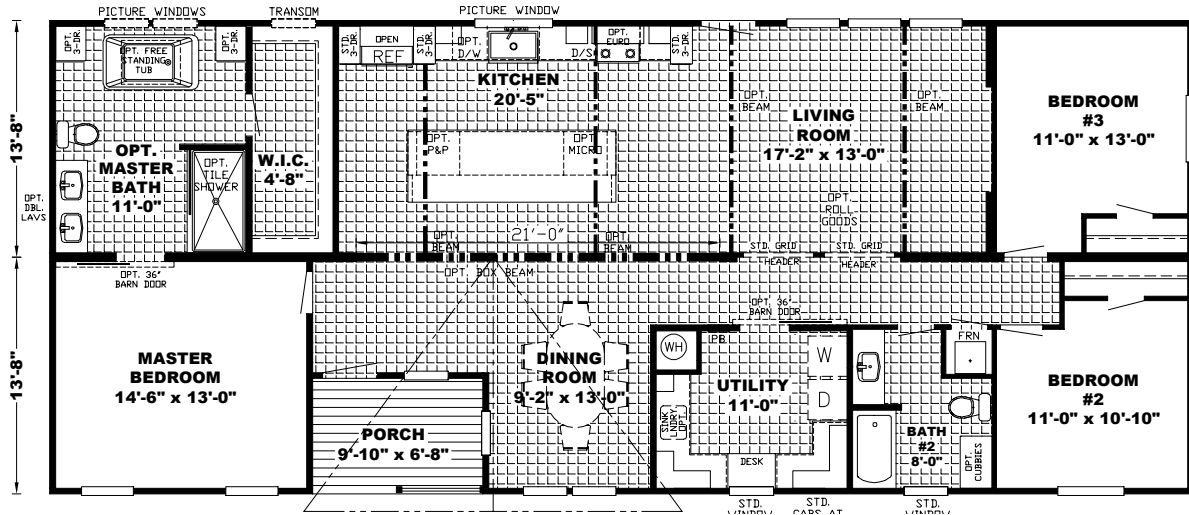


For information on this home contact:
kabcobuilders.com
 Dave Maxey
 o: 256.593.9955
 c: 254.717.4625



Hampton Model Sig28663b

FEATURES: 3 Bed/2 Bath | 1,750 Sq. Ft.

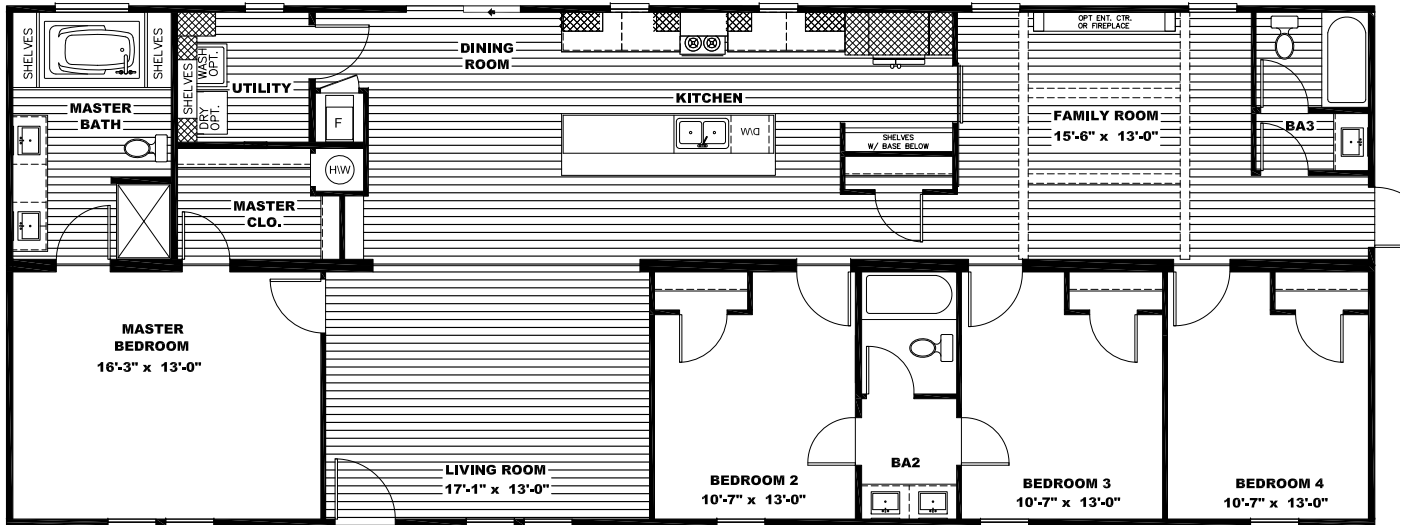


For information on this home contact:
 Rick Duboise
 Rick.Duboise@SEHomes.com
 o: 877.489.3443
 c: 256.298.1673



Boujee XL
Model 44BOU28724AH20

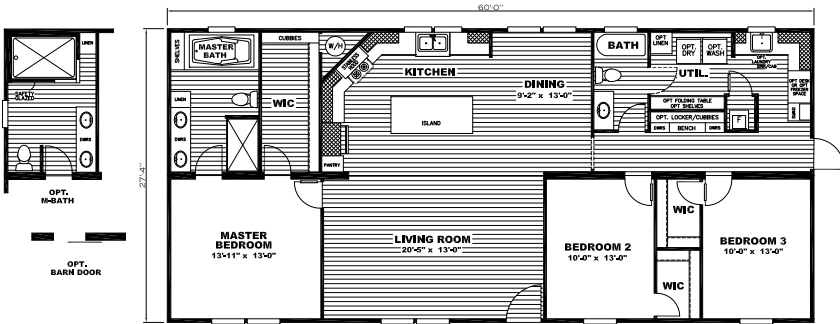
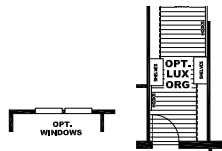
FEATURES: 4 Bed/3 Bath | 1,980 Sq. Ft.



For information on this home contact:
Brandon.Lawson@SEHomes.com
will.bragwell@sehomes.com
cody.grissom@sehomes.com
 o: 256.747.8589




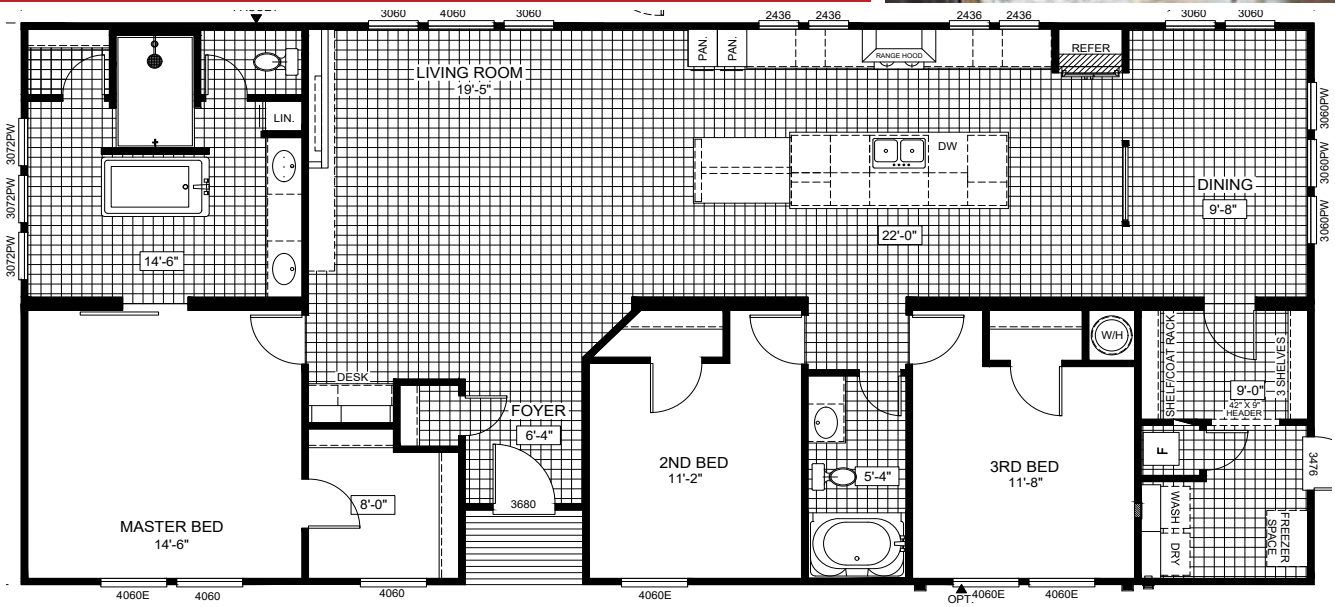
Savannah Stella
 Model FAC28603A
 FEATURES: 3 Bed/2 Bath | 1,640 Sq. Ft.



For information on this home contact:
 Scott Smotherman
 Scott.Smotherman@Claytonhomes.com
 o: 731.925.1902
 c: 731.412.7868





**The Anderson
Model 6762cav**
FEATURES: 3 Bed/2 Bath | 1,956 Sq. Ft.



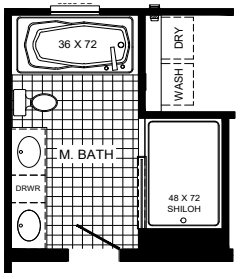
For information on this home contact:
 Cavalier Homes
 Clay McCoy
 o: 800.806.9994
 c: 205.275.3015
Clay.mccoy@cavhomesinc.com



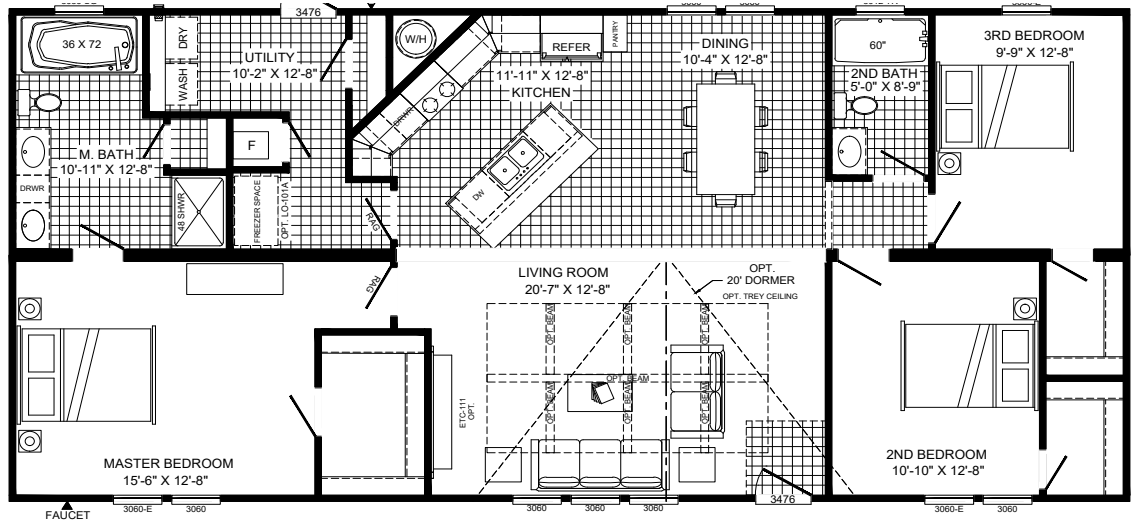


The Kimmel Model 5056ADM

FEATURES: 3 Bed/2 Bath | 1,546 Sq. Ft.




OPT. CERAMIC SHOWER



For information on this home contact:
 Scott.Tyra@Cavhomesinc.com
 Harold.Raper@Cavhomesinc.com
 c: 205.921.3135

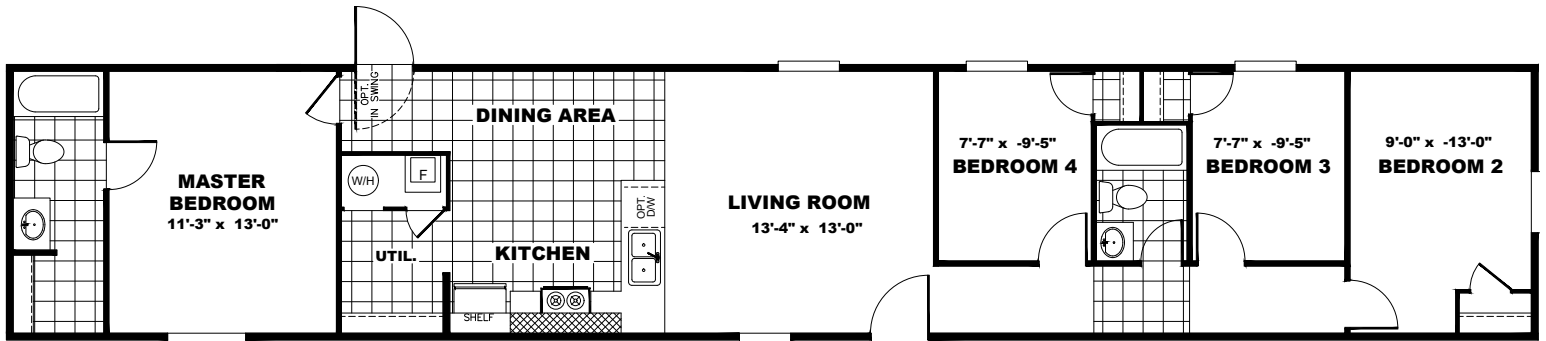




The Grand

Model TRS14763B

FEATURES: 4 Bed/2 Bath | 1,039 Sq. Ft.

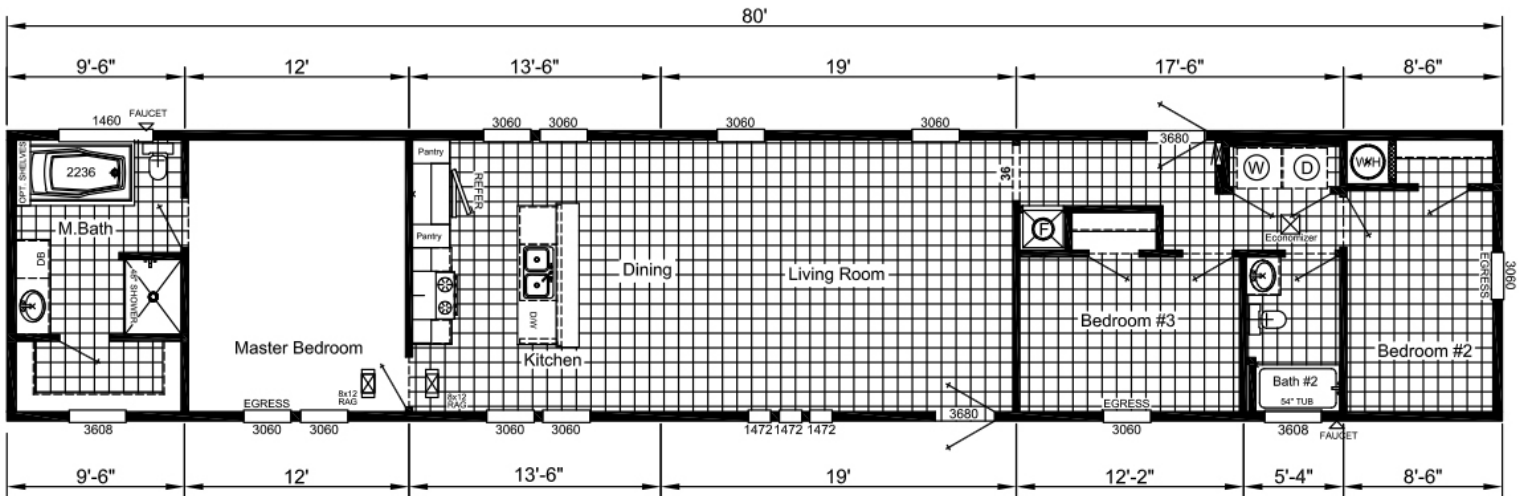


For information on this home contact:
 Jess Cooper
Jess.Cooper@owntru.com
 Wes Watts
Wes.Watts@owntru.com
 o: 205.935.1997



Sunshine HOMES Prime Model PRI1684-1021

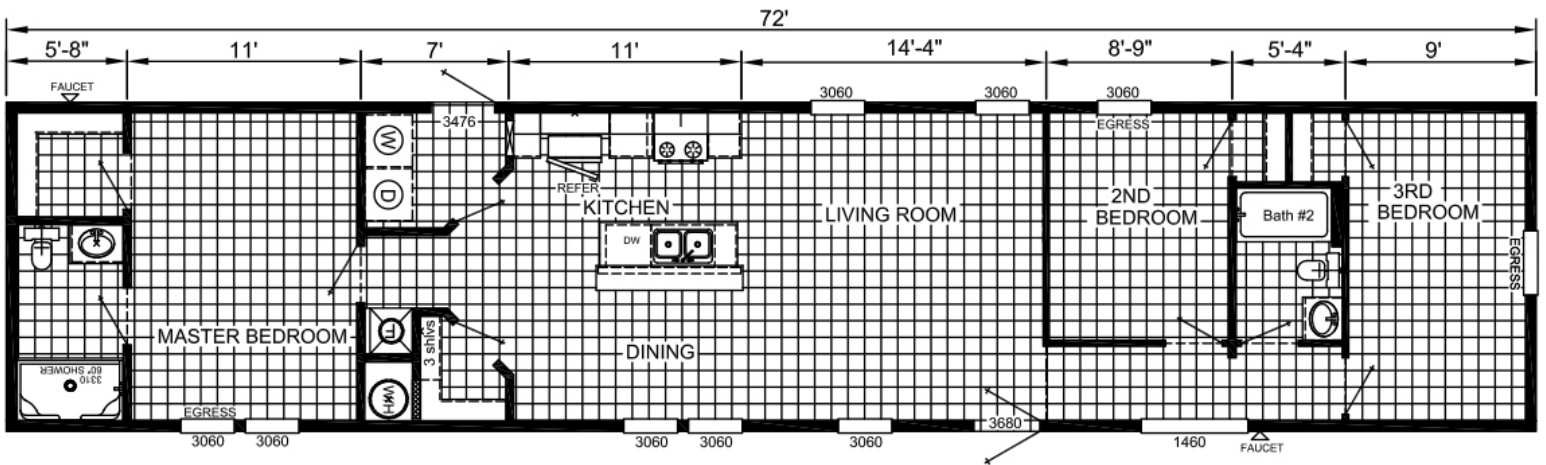
FEATURES: 16x84 | 3 Bed/2 Bath 1 | 1,248 Sq. Ft.



For information on this home contact:
www.sunshinehomes-inc.com
 o: 1.800.462.7847
 jongilbert@sunshinehomes-inc.com



Sunshine HOMES **SSD**
Model SSD1676-1502
FEATURES: 16x76 | 3 Bed/2 Bath 1 | 1,123 Sq. Ft.

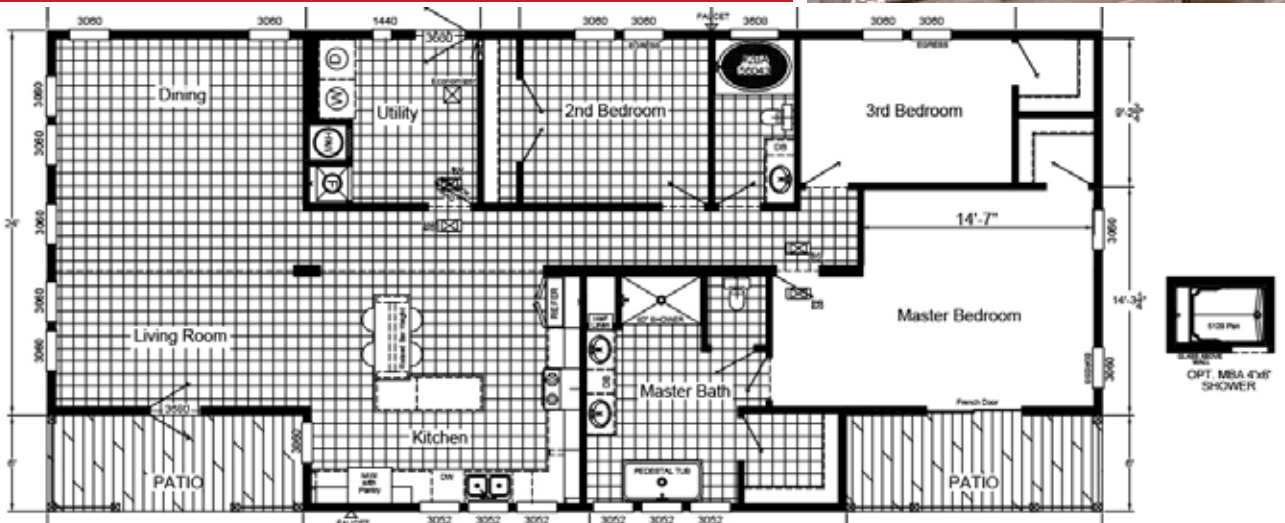


For information on this home contact:
www.sunshinehomes-inc.com
 o: 1.800.462.7847
 jongilbert@sunshinehomes-inc.com



Sunshine HOMES Prime Model PRI3270-2024

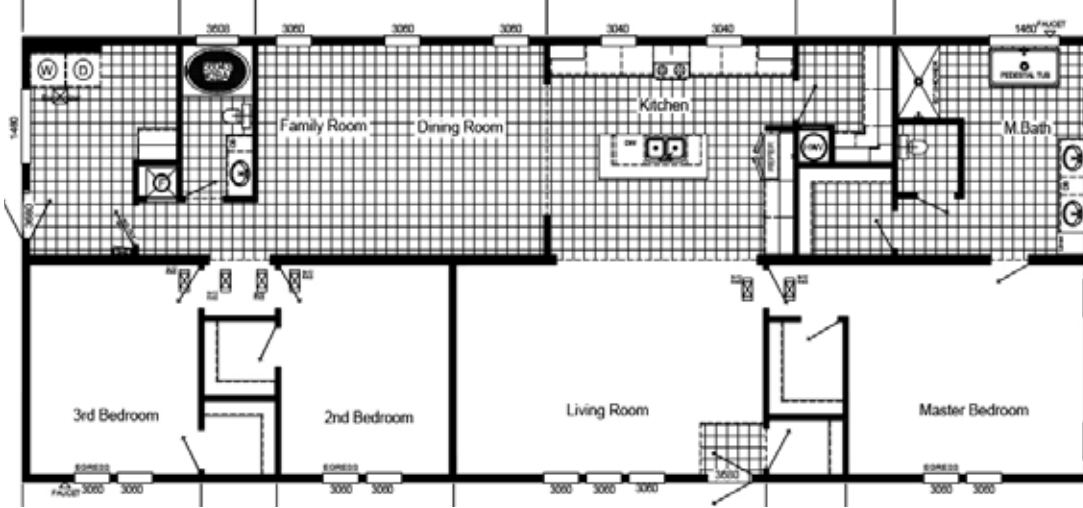
FEATURES: 32x80 | 3 Bed/2 Bath 1 | 2,280 Sq. Ft.




For information on this home contact:
www.sunshinehomes-inc.com
 o: 1.800.462.7847
jongilbert@sunshinehomes-inc.com



Sunshine HOMES Prime Model PRI3280-2025
FEATURES: 32x80 | 3 Bed/2 Bath 1 | 2,280 Sq. Ft.

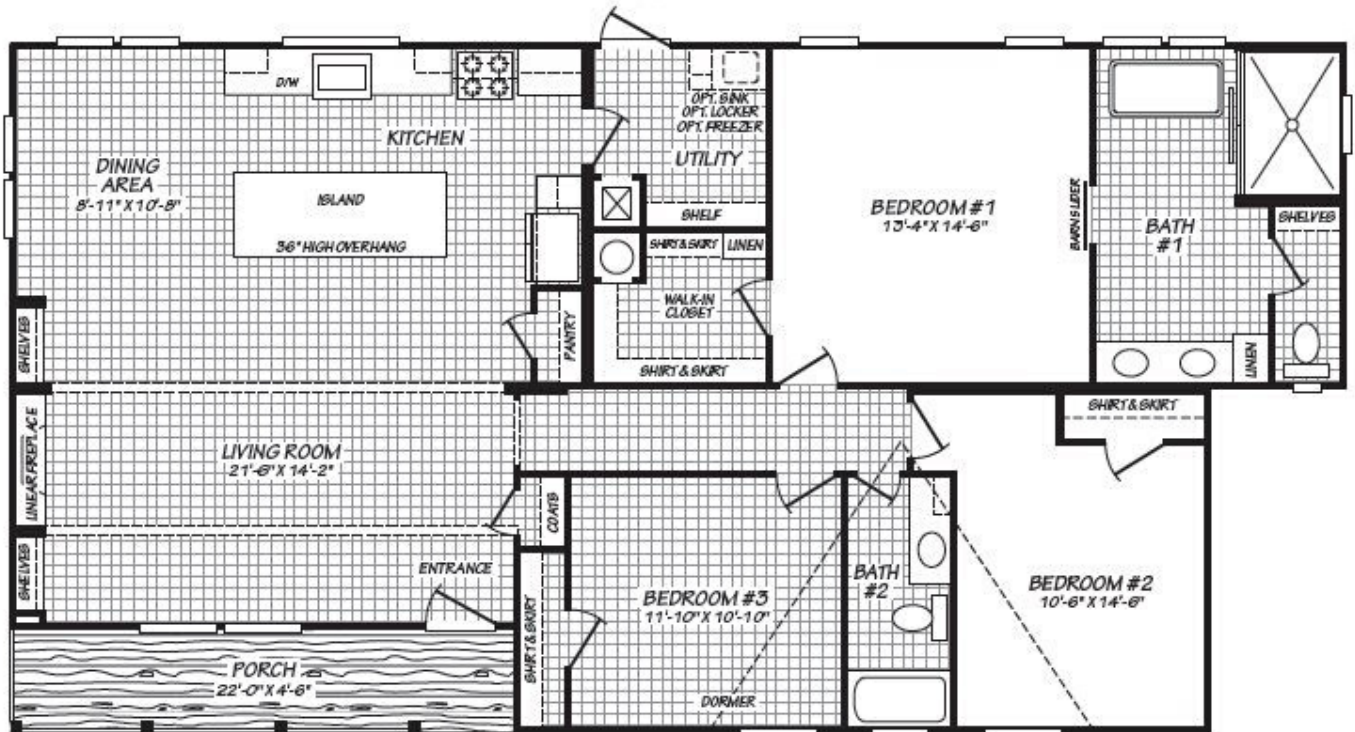


For information on this home contact:
www.sunshinehomes-inc.com
o: 1.800.462.7847
jongilbert@sunshinehomes-inc.com

The Magnolia Model 32583H

FEATURES: 3 Bed/2 Bath | 1,551 Sq. Ft.

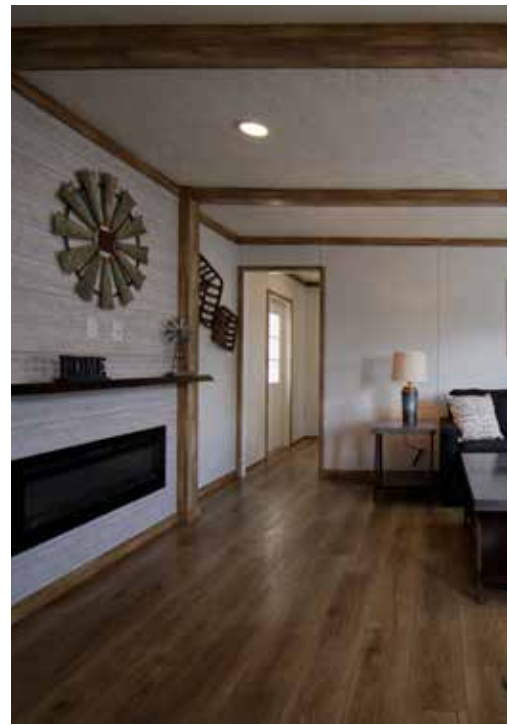
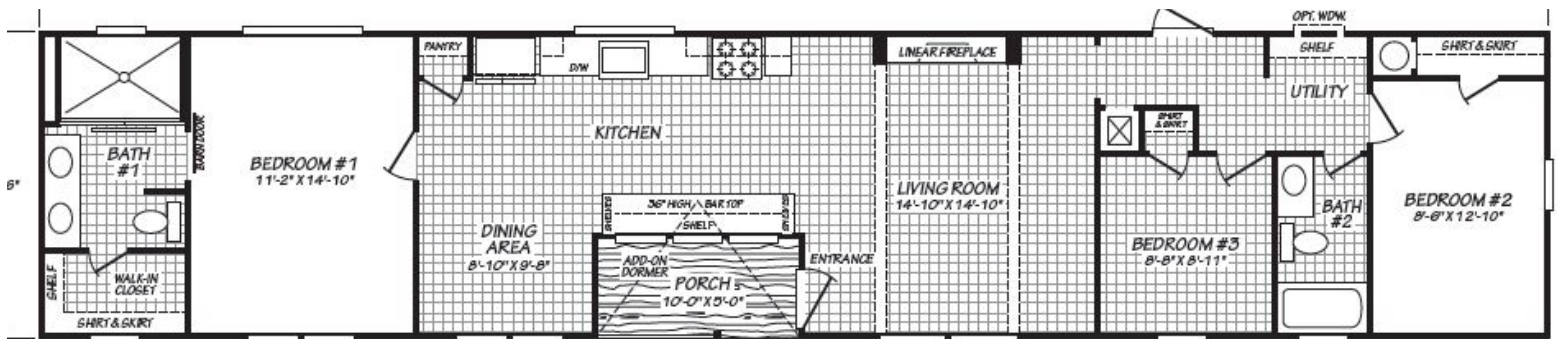


For information on this home contact:
 Fleetwood Homes of Lafayette TN
 O: 800.476.0084
 Doug Ray
 C: 615.670.2496
doug.ray@fleetwoodhomes.com



Farmhouse Model 16763

FEATURES: 3 Bed/2 Bath | 1,128 Sq. Ft.

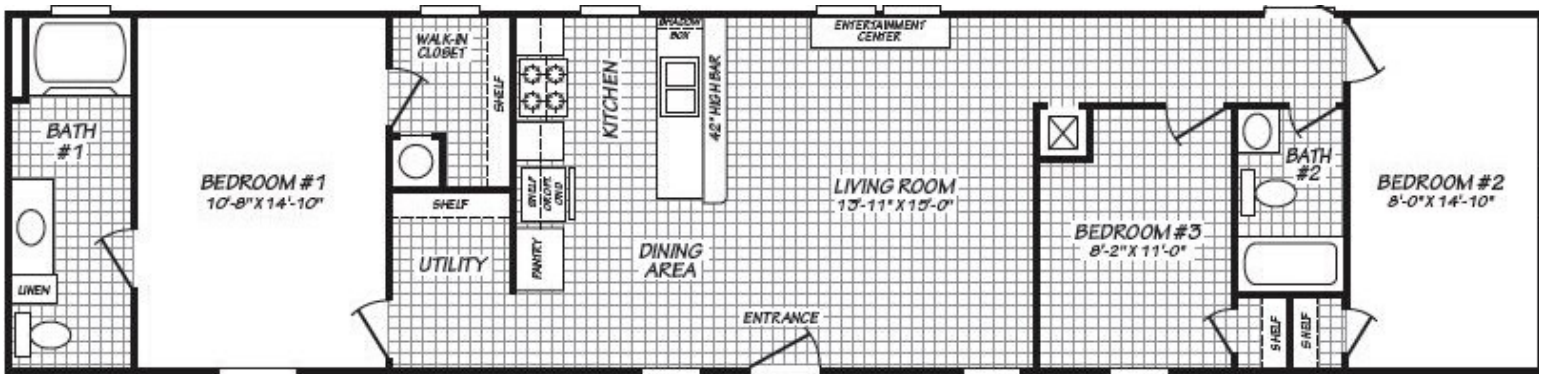


For information on this home contact:
 Fleetwood Homes of Lafayette TN
 O: 800.476.0084
 Doug Ray
 C: 615.670.2496
doug.ray@fleetwoodhomes.com



The Liberty Model 16663L

FEATURES: 3 Bed/2 Bath | 1,0232 Sq. Ft.

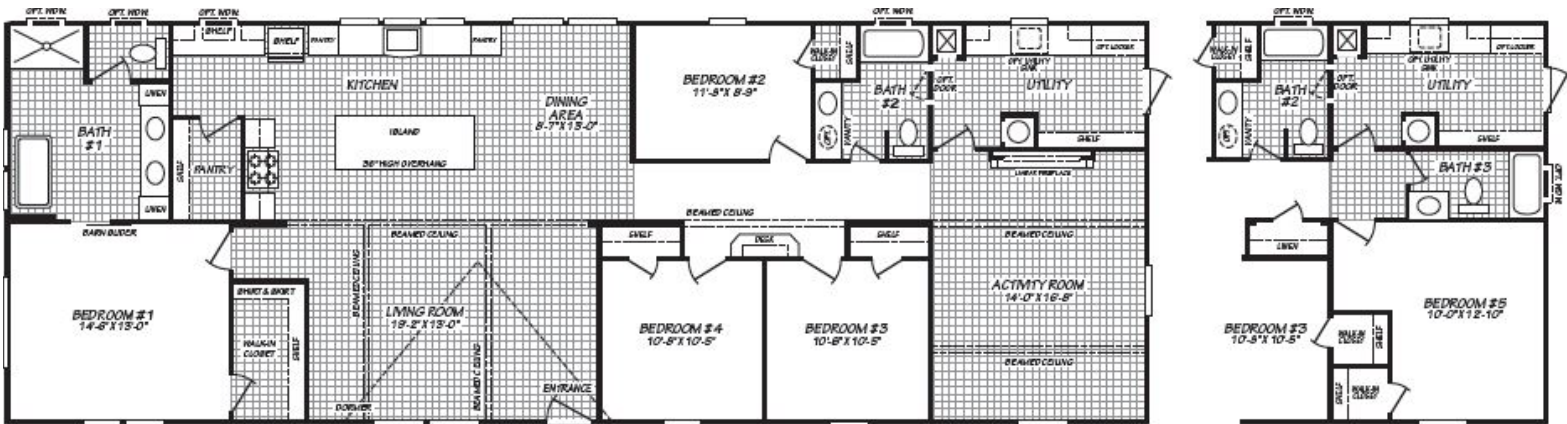


For information on this home contact:
Fleetwood Homes of Lafayette TN
O: 800.476.0084
Doug Ray
C: 615.670.2496
doug.ray@fleetwoodhomes.com



The Entertainer Model 28764E

FEATURES: 4 Bed/2 Bath | 2,026 Sq. Ft.



OPTIONAL 5TH BEDROOM WITH 3RD BATH

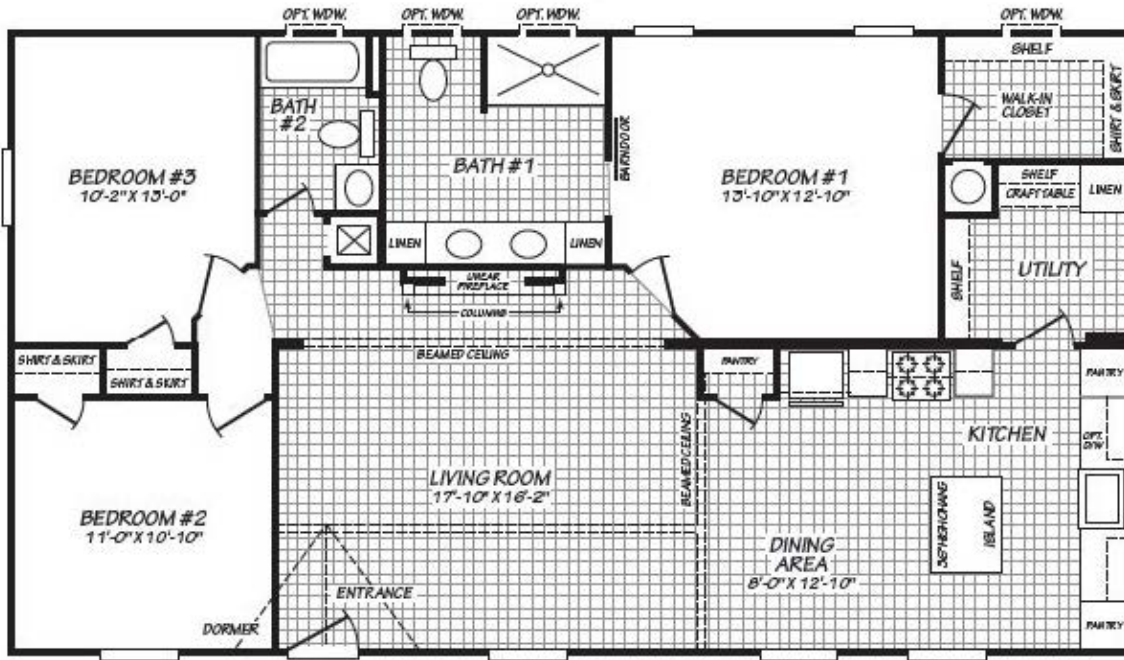


For information on this home contact:
 Fleetwood Homes of Lafayette TN
 O: 800.476.0084
 Doug Ray
 C: 615.670.2496
doug.ray@fleetwoodhomes.com



The Bella Model 28483H

FEATURES: 3 Bed/2 Bath | 1,280 Sq. Ft.

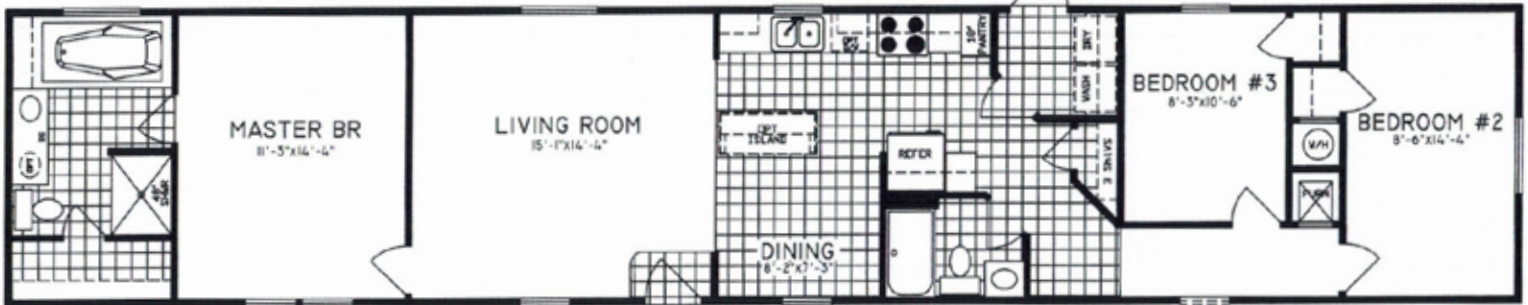


For information on this home contact:
Fleetwood Homes of Lafayette TN
O: 800.476.0084
Doug Ray
C: 615.670.2496
doug.ray@fleetwoodhomes.com



Model 9013

FEATURES: 16x80 | 3 Bed/2 Bath | 1,140 Sq. Ft.

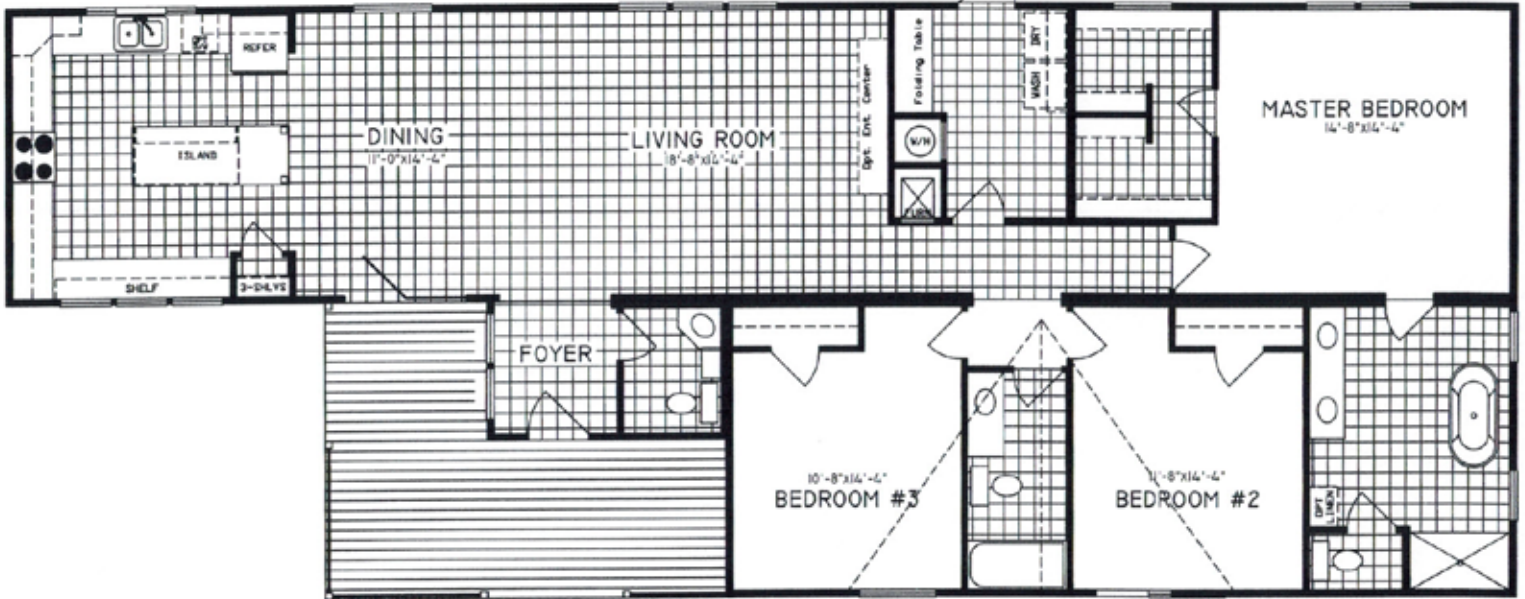


For information on this home contact:
o: 601.636.5401
Brent Cappaert
bcappaert@cappaerthousing.com



Model 9922

FEATURES: 32x80 | 3 Bed/2 Bath | 2,040 Sq. Ft.

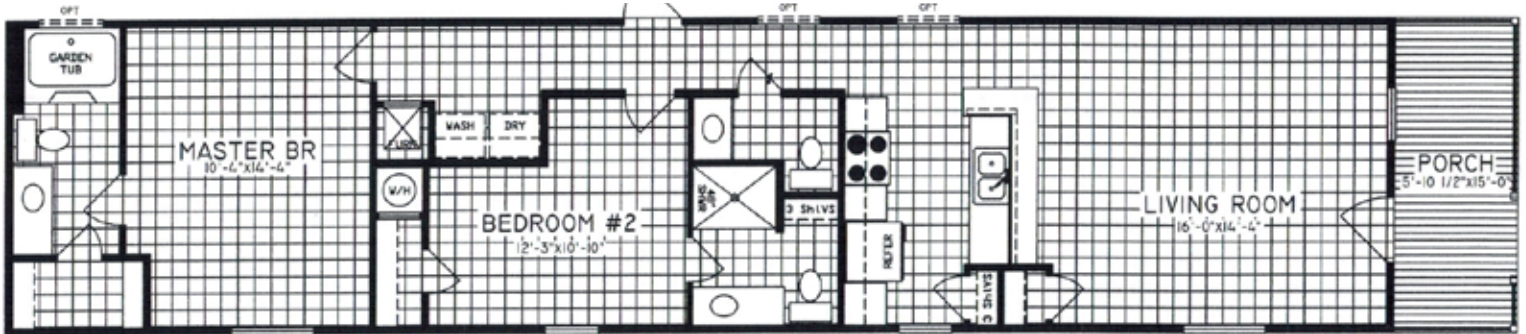


For information on this home contact:
o: 601.636.5401
Brent Cappaert
bcappaert@cappaerthousing.com



Model 7110

FEATURES: 16x76 | 2 Bed/2.5 Bath | 1,080 Sq. Ft.



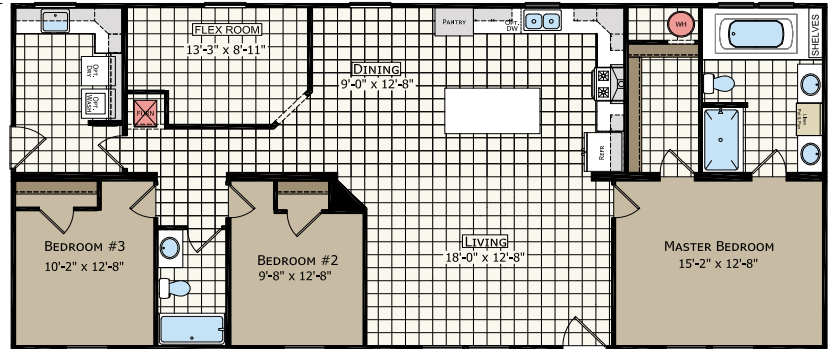
For information on this home contact:
o: 601.636.5401
Brent Cappaert
bcappaert@cappaerthousing.com

CHAMPION

MANUFACTURED BEAUTIFULLY

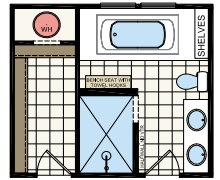
The Harper Model 6024

FEATURES: 28x64 | 3 Bed/2 Bath | 1600 Sq Ft



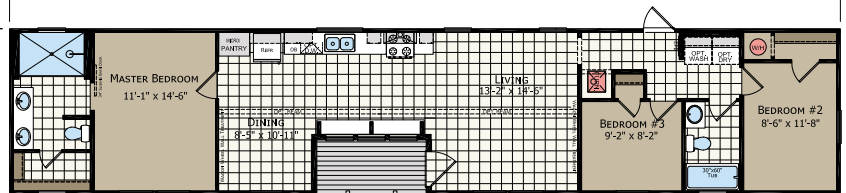
OPTIONAL 4TH BR

OPTIONAL EXTREME GLAMOUR



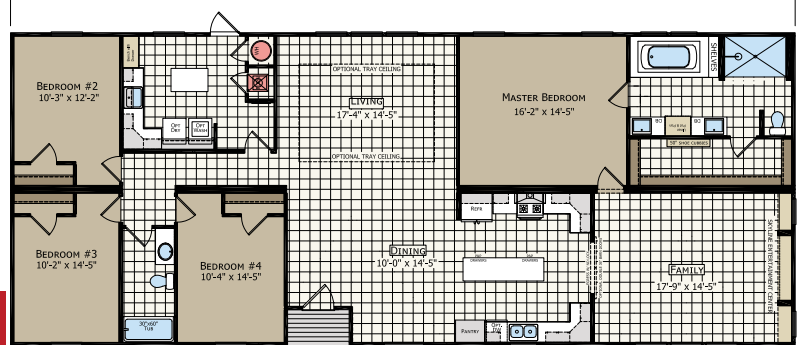
The Bennette Model 1613

FEATURES:
3 Bed/2 Bath
1152 Sq Ft | 16x80



The Stella Model 6022

FEATURES:
4 Bed/2 Bath
2305 Sq. Ft. | 32x80

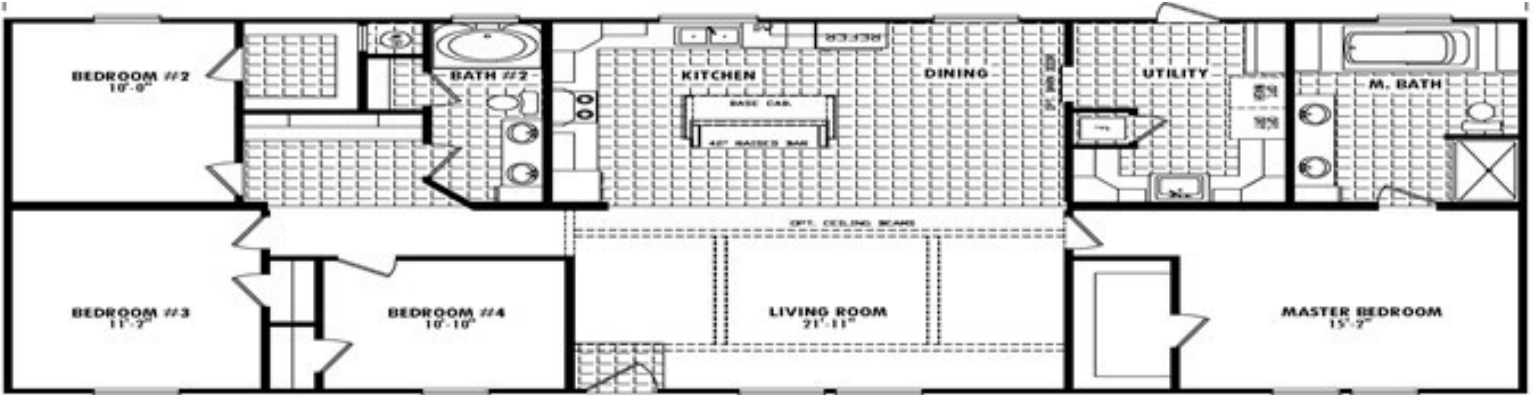


For information on this home contact:
Justen Ford
o: 731-333-9179
JFord@championhomes.com



The Fender Model x-7041

FEATURES: 32x72 | 4 Bed/2 Bath | 2,040 Sq. Ft.

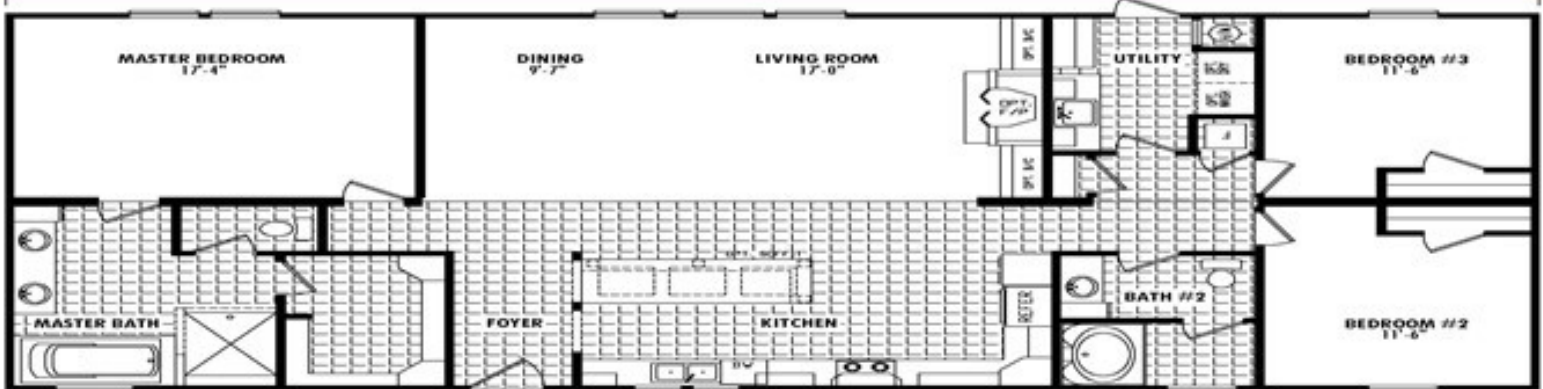


For information on this home contact:
www.platinumbuilt.com
o: 877-557-2469
Elvis Jennings
elvisj@hstr.com



The Gibson Model x-7042

FEATURES: 32x70 | 3 Bed/2 Bath | 1,980 Sq. Ft.

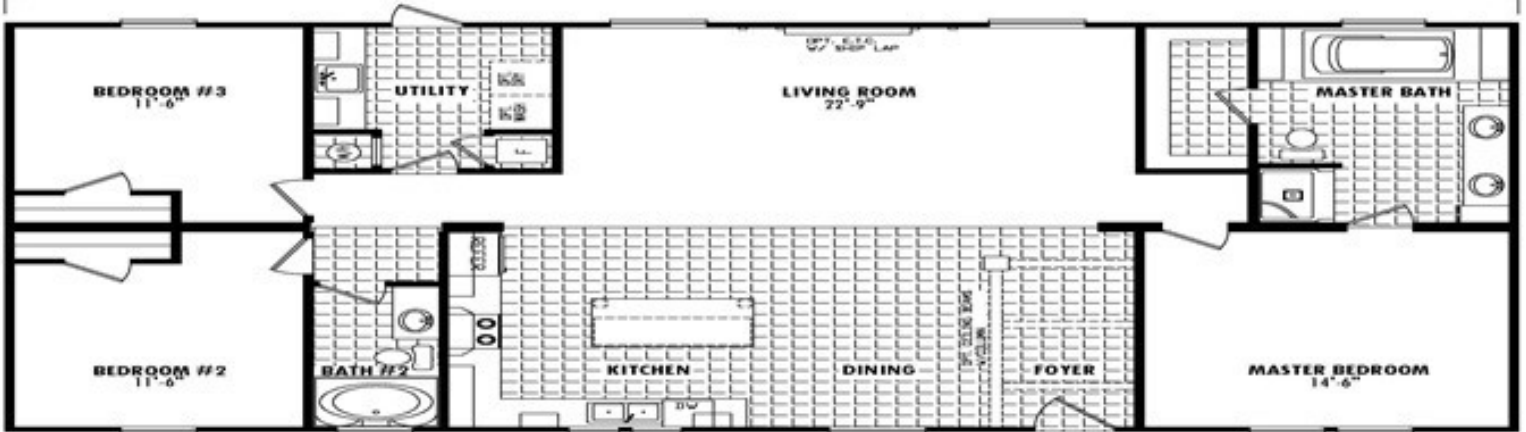


For information on this home contact:
www.platinumbuilt.com
o: 877-557-2469
Elvis Jennings
elvisj@hstr.com



The Martin Model x-7040

FEATURES: 32x64 | 3 Bed/2 Bath | 1,800 Sq. Ft.



For information on this home contact:
www.platinumbuilt.com
o: 877-557-2469
Elvis Jennings
elvisj@hstr.com

alamha.org

Alabama Manufactured Housing Association
Post Office Box 241607 | Montgomery, AL 36124-1607